

Respect

We show empathy and kindness to all members of our community.

Responsibility

We care for ourselves, our environment and show independence.

Excellence

We have high expectations for learning and strive to grow as we persevere.

Inclusion

We believe all are equal and communication and teamwork is our strength.

People



I share with others.



I communicate respectfully.



I show kindness and respect the rights of others.



I think about the safety of others.



I ask for help when I need it.



I celebrate and recognise my peers' successes.



I contribute thoughtfully to class discussions.



I take risks when learning new things.



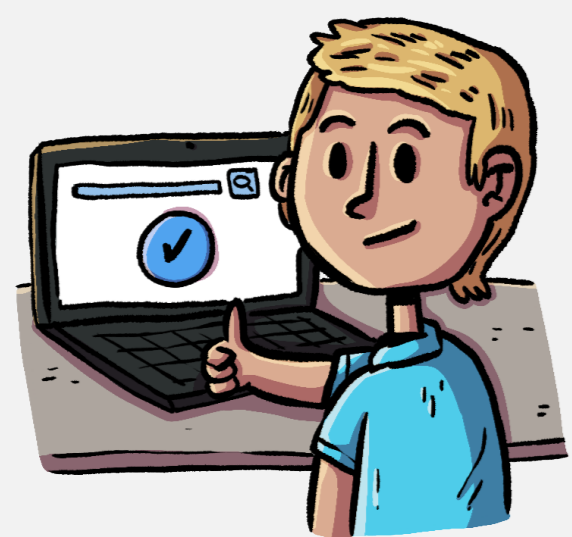
I help others to feel safe.

I help others when they need it.

I speak up when someone isn't being treated fairly.

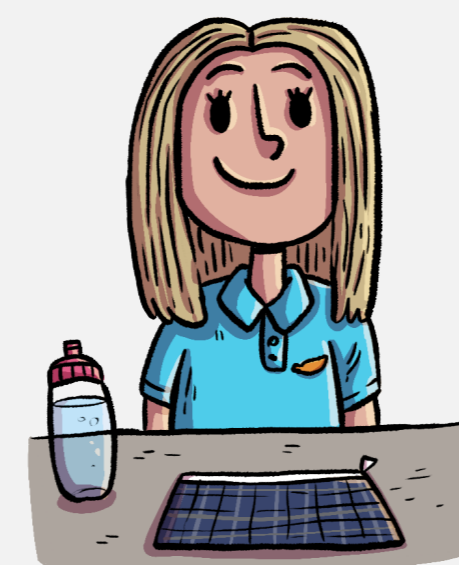
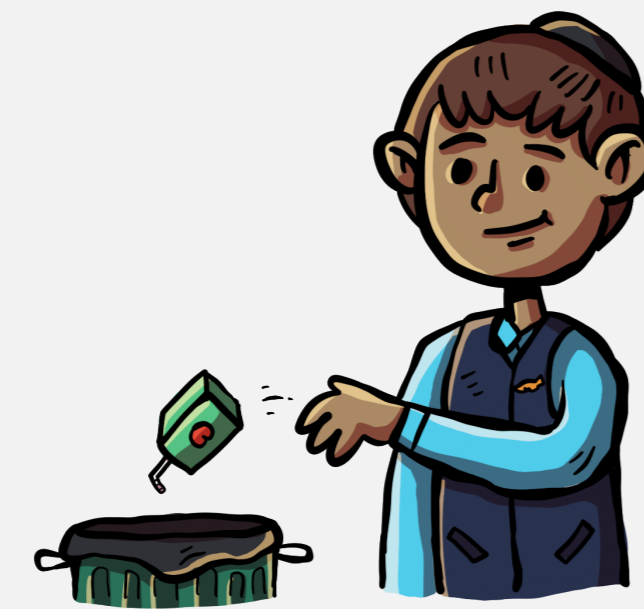


Places



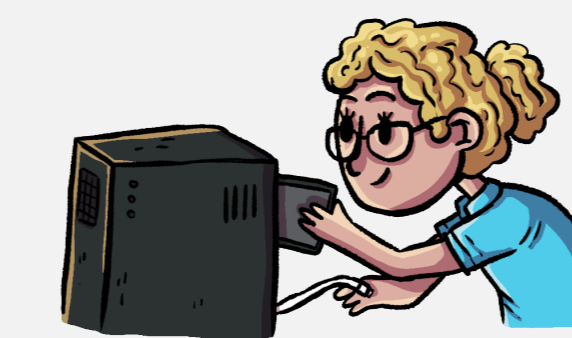
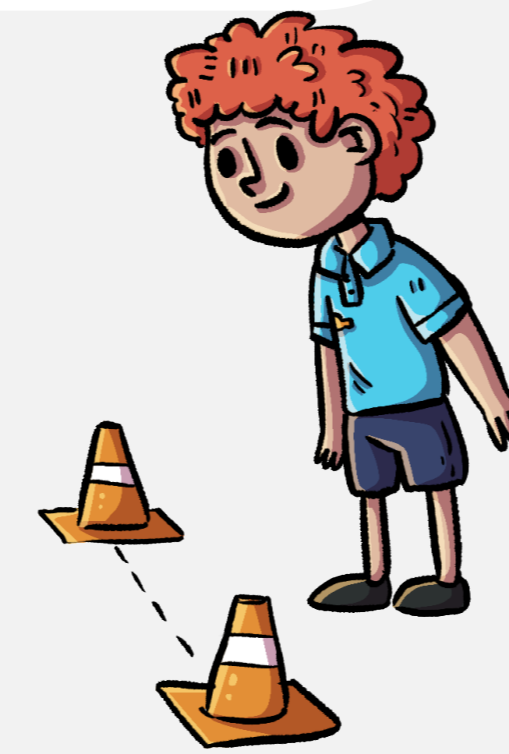
I use resources, devices and spaces appropriately.

I put rubbish in the bin or in recycling.

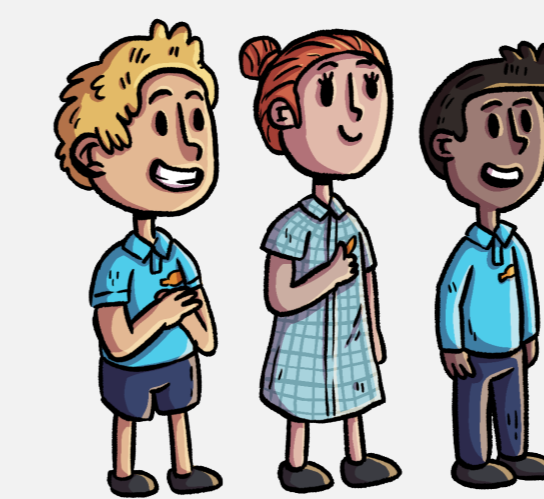


I keep my learning space organised.

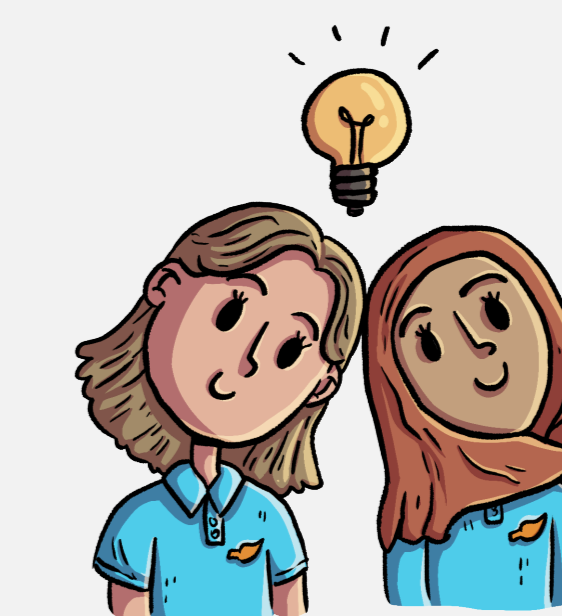
I move safely around the school.



I care for our school environment.



I represent our school with pride.



I work collaboratively in all learning spaces.

I acknowledge the Traditional Land we are on.



Me



I am resilient and I can seek support if I need it.

I show whole body listening.



I am honest and polite.



I stay focused and on task.

I complete tasks within the expected time frame.



I am prepared for my learning.

I reflect on my personal learning goals.



I take risks and persevere in my learning.

I have a growth mindset.



I inquire and ask questions.

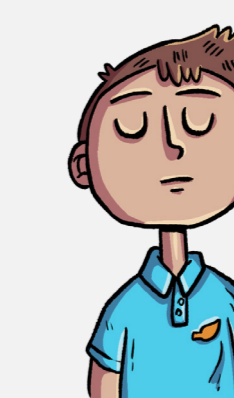


I have high expectations for my learning.



I am aware that everyone learns differently.

I respect the rights of others.



I share my voice and opinions.

