



SCHOOL
NURSING
PROGRAM



Transition to Prep Student health

Department of Education and Training
Primary School Nursing Program



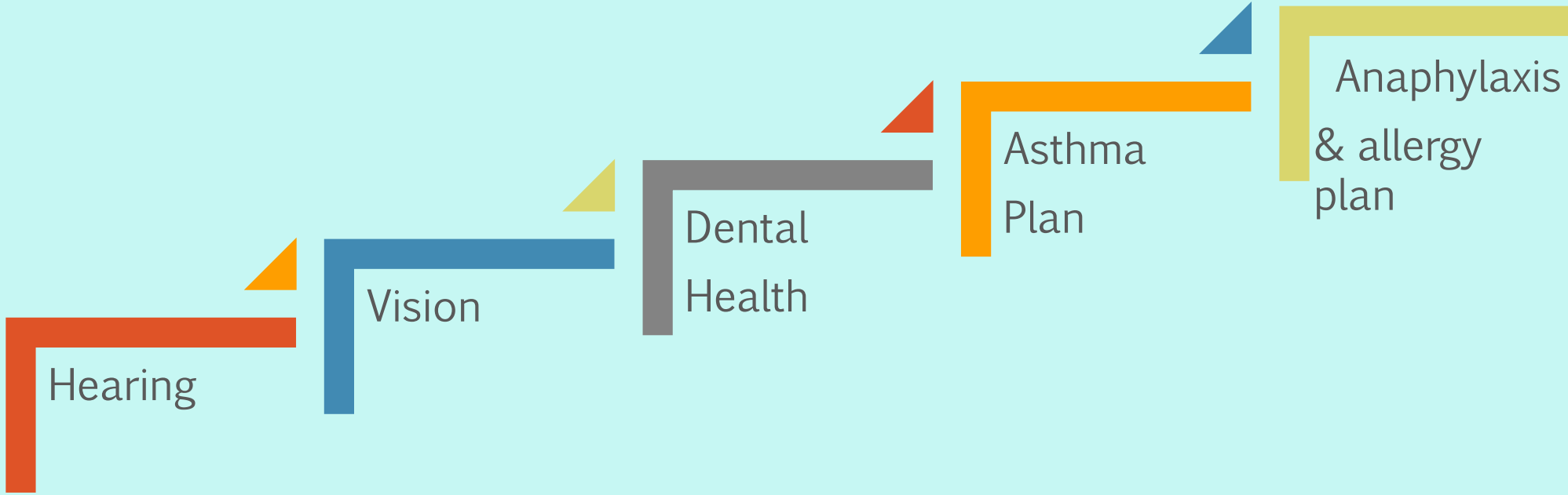
Education
and Training

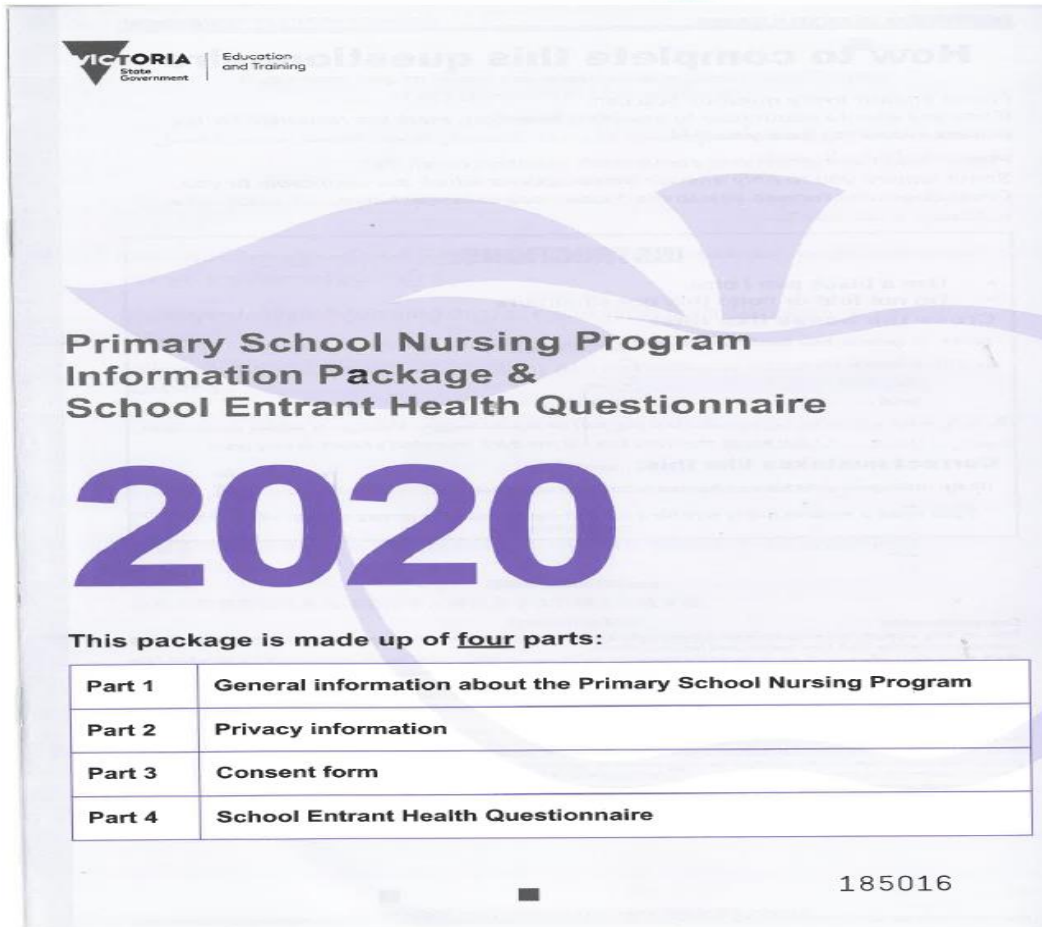
The Primary School Nursing Program

- Aims to promote child health and wellbeing
- Provides an opportunity to assess your child's health and raise any concerns or challenges you may have
- Aims to support your child's learning by early identification of potential health related learning difficulties
- Registered Nurses employed by DET to visit your school annually



Getting ready for school





The Questionnaire may be sent home with your child OR the school will let you know how it can be completed



Part 3 - Your Consent

Name of student		School Name	
------------------------	--	--------------------	--

I confirm the following:

- I have read Parts 1 and 2 of this Primary School Nursing Program Information Package.
- I understand how my child's personal information and health information will be collected, used and disclosed within DET.
- I understand that I may withdraw my consent for my child to participate in the Primary School Nursing Program at any time.

Please select one of the following options:

- Yes** I CONSENT to the School Nurse conducting a health assessment of my child, if required (this may include checking my child's vision, hearing, speech and teeth).
- No** I DO NOT consent to the School Nurse conducting a health assessment of my child.

Signature		Relationship to child (Parent/Legal Guardian/ Carer)	
Name		Date	

Who may sign this SEHQ Consent Form on behalf of a child?

One of the following people can sign this form:

- a person with parental responsibility for "major long term issues" as defined in the *Family Law Act 1975* (Cth)
- a person appointed as "guardian" under the *Children, Youth and Families Act 2005* (Vic).

If neither of the above people are available, an informal carer may sign this form. An informal carer is a relative or other responsible adult with whom the child lives, and who has day to day care of the child. Informal carers should sign an 'Informal Carer' statutory declaration, which is available at: www.education.vic.gov.au (under Decision Making Responsibilities For Students).

Withdrawing consent

You may withdraw consent to your child receiving services under the Primary School Nursing Program at any time, by writing to your child's Primary School Nurse Manager. Before withdrawing consent, we recommend discussing this first with school staff or the Primary School Nurse Manager for your region. Withdrawing consent means that services under the Primary School Nursing Program will cease from the time the Primary School Nurse receives the withdrawal. Where there are safety concerns or risks, other activities may occur.

For more information please contact the Primary School Nurse Manager at your local DET office listed on page 20 of the attached School Entrant Health Questionnaire.

Do not write comments in this space

Consent
It's your choice.
Please tick the
Yes or No box
AND sign.
Return form to
school in sealed
envelope

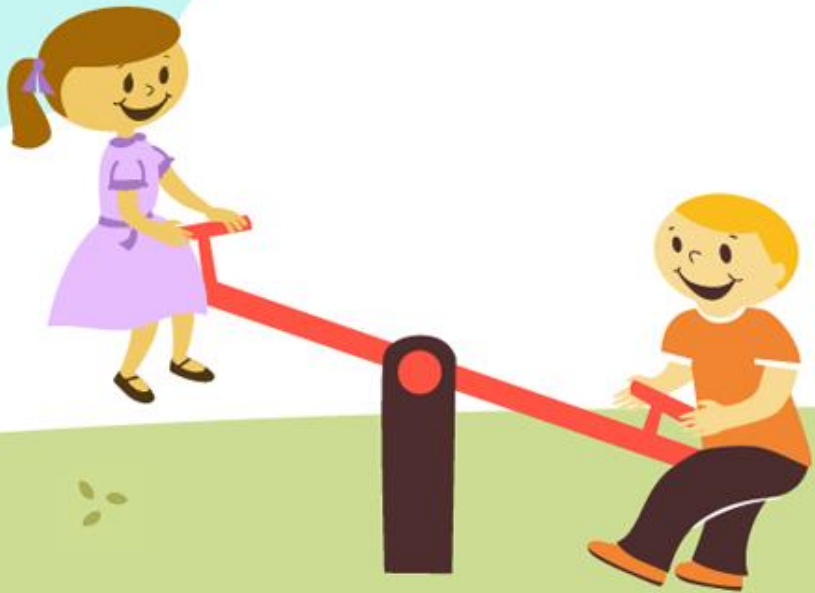


- Your Nurse will look at your responses in the SEHQ .
- Everyone who has given consent will get a letter
- Some Parents/Carers will receive a phone call to discuss the SEHQ.
- Some children will be seen by the Nurse to assess vision, hearing or speech

What happens next after completing the SEHQ?



Common Health Concerns



Possible Concerns

- Toileting during the day
- Bed wetting
- Concentration & attention
- Writing skills
- Speech
- Sleep
- Behaviour-tantrums, shyness, anxiety
- Generalized anxiety about school and /or leaving Parents /Carers



- The following websites provide parenting and health/development advice:

- Raising Children Network www.raisingchildrennetwork.net.au
- Emerging Minds www.emergingminds.com.au
- Royal Children's Hospital Kids Health Info www.rch.org.au/kidsinfo/
- Better Health Channel www.betterhealth.vic.gov.au
- Healthy Start to School https://www.betterhealth.vic.gov.au/-/media/bhc/files/campaign/a-healthy-start-to-school/2019_healthy-start-to-school_pdf.pdf?la=en&hash=DFF16C69903893126DBE50CC494F4CEC0DCC472F
- Ask Izzy: Is a mobile website that connects people who are in crisis with the services they need right now and nearby.

<https://askizzy.org.au>



Conclusion

Information collected under the Primary School Nursing Program will be used to:

- Identify your child's health needs
- Tailor help based on your child's individual needs
- Manage, plan, improve and evaluate the delivery of school health and educational services
- It is important to note the Department of Education values the privacy of every individual and is committed to protecting all personal and health information we collect



Questions?

